

Quick Couplings and Bag Closures for **FOOD, BEVERAGE & WATER**



Colder Products Company

Colder Products Company — a world leader in the design and manufacture of plastic quick disconnects — has combined innovative engineering with leading edge manufacturing to provide a diverse range of fluid management solutions. For over 25 years Colder has been providing innovative coupling and fitting technologies for industrial, biopharmaceutical, medical, chemical, and packaging markets.

Here are just a few of the food and beverage markets Colder serves:

- Food service organizations
- Coffee roasters
- Install and service contractors
- Large Office Coffee Service (OCS) operators
- Vending equipment dealers
- Independent bottlers
- Ice machinery dealers
- Water conditioning equipment dealers
- OEMs
- Appliance dealer consortiums

■ Information and literature on Colder product lines

- Industrial
- Medical Device
- Bioprocessing
- High Purity & Specialty Chemical Handling
- Smart Technology
- Food & Beverage Service

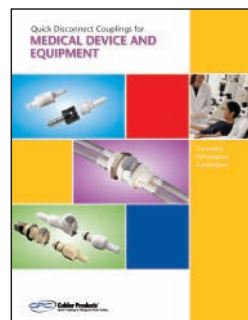
■ Information on custom applications

- Online tools and selector guides
- Downloadable CAD drawings
- Distributor locations
- Direct connections to Colder engineers

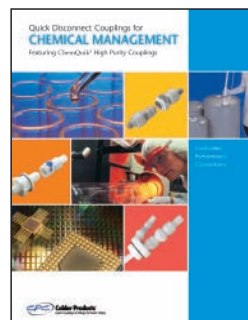
On-line Catalogs and Literature



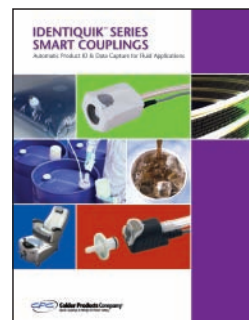
Industrial



Medical Device



Chemical Management

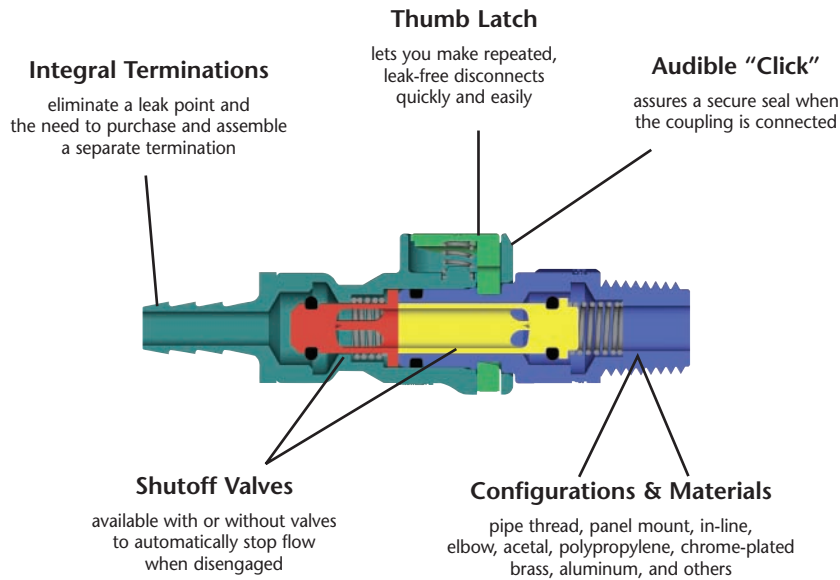


Smart Technology

WARNING: Pressure, temperature, chemicals, and operating environment can affect the performance of couplings. It is the customer's responsibility to test the suitability of Colder's products in their own applications.



Why use a Colder coupling?



FLEXIBILITY: Subassemblies and Subcontractors

Reduce assembly time on machinery and equipment designed in modules and then assembled at different times, at different locations or using assemblies from subcontractors. Connect and disconnect plastic tubing by simply clicking together versus fastening clamps over fittings and hard plumbing.

UTILITY: Replacements and Upgrades

Upgrades snap into place. Replacements are easy and intuitive. Expensive plant, process and machine downtime is kept to a minimum.

SAFETY: Eliminate Dangerous and Messy Spills

Automatic shutoff valves reduce or eliminate spills and leaks. Connect and disconnect under pressure and safely transfer dangerous, flammable or toxic solvents and other toxic fluid media. Increase employee and consumer safety.

SERVICEABILITY: Maintenance and Repairs

One-handed operation makes field service and scheduled maintenance quick and easy. Closed loop and pressurized fluid systems run better and last longer, making maintenance easier. No leaks or spills from plastic tubing or hose connections.

MODULARITY: Attachments and Accessories

Expand product lines and increase product life-cycle and profitability by offering intuitive, tool-free attachments and accessories. Colder's patented one-hand push-button design makes adding product accessories simple and straightforward.

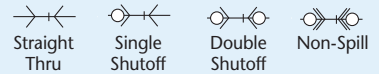
CONVENIENCE: Intuitive and Economic

"Click-to-connect" couplings provide reliable, intuitive, cost-effective connections for fluid flow applications. A standard product line of over 4,000 items makes specifying and installation easy and economical.

PLEASE NOTE: Not all of the products listed in this catalog are available for immediate shipment. Some products may require a setup charge unless minimum order quantities are met. Please contact your distributor or Colder for further details or to determine availability.



Table of Contents



Couplings connected and shown actual size (approximate).
For additional terminations and configurations, see product pages.

C_v values are expressed in English based on GPM and PSI, and in metric (shown in parentheses) based on LPM and Bar.

General Purpose Couplings/Plastic

PAGE 6

APC Series

APC22004 & APC17006SH



Material: Acetal
Tubing Range: 1/4" to 3/8" (6.4mm to 9.5mm)
Feature: Plastic-latched couplings

- C_v~1.28 (18.44) max
- C_v~0.80 (11.53) max
- C_v~0.70 (10.09) max

PAGE 8

PMC Series

PMC2201 & PMC1704



Material: Acetal
Tubing Range: 1/16" to 1/4" (1.6mm to 6.4mm)
Feature: General purpose couplings

- C_v~0.51 (7.35) max
- C_v~0.26 (3.75) max
- C_v~0.24 (3.46) max

PAGE 10

PLC Series

PLC22004 & PLC17006



Material: Acetal
Tubing Range: 1/4" to 3/8" (6.4mm to 9.5mm)
Feature: General purpose couplings

- C_v~1.40 (20.17) max
- C_v~0.82 (11.82) max
- C_v~0.51 (7.35) max

PAGE 12

HFC12 and HFC35 Series

HFCD22612 & HFC171212



Material: Polypropylene (*as shown*)
Polysulfone (*white*)
UV Polysulfone (*black*)
Tubing Range: 3/8" to 3/4" (9.5mm to 19.0mm)
Feature: High flow family of couplings

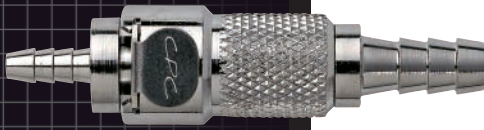
- C_v~3.94 (56.77) max
- C_v~2.50 (36.02) max
- C_v~2.04 (29.39) max

General Purpose Couplings/Metallic

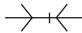
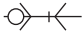
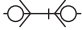
PAGE 16

MC Series

MC2202 & MC1704



Material: Chrome-Plated Brass
Tubing Range: 1/8" to 1/4" (3.2mm to 6.4mm)
Feature: General purpose couplings

-  Cv~0.51 (7.35) max
-  Cv~0.26 (3.75) max
-  Cv~0.24 (3.46) max

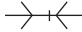
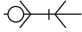
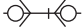
PAGE 18

LC Series

LCD22004 & LC17006



Material: Chrome-Plated Brass
Tubing Range: 1/4" to 3/8" (3.2mm to 9.5mm)
Feature: Same as MC with higher flow

-  Cv~1.40 (20.17) max
-  Cv~0.82 (11.82) max
-  Cv~0.51 (7.35) max

Liquid Dispensing Couplings

PAGE 20

Universal Dispensing Series

Thread-on 38mm cap



Photos not to scale.



PAGE 21

Puncture Seal Dispensing System



Photo not to scale.

Custom Solutions

PAGE 22

Special Application Capabilities

APC Series

Material: Acetal

The 1/4" flow APC Series features a plastic thumb latch, fewer moving parts and smooth contoured design to deliver ease-of-use and excellent flow in a compact size. The APC Series couplings are designed for use in beverage and water applications i.e. coffee brewer connections and inline water filter changeouts. The pivoting elbow helps avoid kinks or unnecessary bends in the fluid lines and makes maintenance a "snap."



Patent Protected

Applications:

- Potable water filtration
- Coffee brewer connection
- Beverage dispensing

FEATURES

BENEFITS

Shrouded thumb latch	Protects against accidental disconnects
Elbow configuration that pivots	Can be plumbed from any direction and fits in tight spaces
Clicks when connected	Assurance of a reliable connection
Intuitive design	Service work done faster, reducing costs

Coupling Bodies



Couplings conform to listing requirements of NSF standard C-2 for food equipment.

Acetal

Female 45° Flare Thread

THREAD SIZE	STRAIGHT THRU	SHUTOFF	LENGTH
1/4" Female FL	42000		1.13
3/8" Female FL	45400	45500	1.83

Pipe Thread

THREAD SIZE	STRAIGHT THRU	SHUTOFF	LENGTH
1/4" NPT	44400	45600	1.40
3/8" NPT	49200	45700	1.40
3/8" BSPT		9203301	1.40

In-line

Ferruleless Compression Termination — for use with semi-rigid plastic tubing†

TUBING SIZE	STRAIGHT THRU	SHUTOFF	LENGTH
1/4" OD .170" ID	9204300	43200	1.22/1.94
3/8" OD .250" ID	9204400	43300	1.35/2.07
8mm OD 6mm ID	9204600		1.35

Compression Termination — for use with copper or semi-rigid plastic tubing

TUBING SIZE	STRAIGHT THRU	SHUTOFF	LENGTH
1/4" OD	9203800	46000	1.41/1.93
3/8" OD		46100	1.86

Hose Barb

TUBING SIZE	STRAIGHT THRU	SHUTOFF	LENGTH
1/4" ID	40700	42100	1.35/2.07
3/8" ID	40800	42200	1.35/2.07

Panel Mount

Ferruleless Polytube Fitting, PTF†

TUBING SIZE	STRAIGHT THRU	SHUTOFF	LENGTH
1/4" OD .17" ID	92071	92075	1.97
	92072	92076	2.10
	92073	92077	2.10
	92074	92078	2.10
3/8" OD .25" ID			

Hose Barb

TUBING SIZE	STRAIGHT THRU	SHUTOFF	LENGTH
1/4" ID	92079	92082	2.10
5/16" ID	92080	92083	2.10
3/8" ID	92081	92084	2.10

All measurements are in inches unless otherwise noted. Tubing must meet stated inside and outside diameters. Couplings are pictured with valves unless otherwise noted. Straight thru dimension is listed first when two measurements are provided.

†NOTE: Colder's Ferruleless Polytube Fitting terminations do not require ferrules to achieve a leak-free connection and are therefore easier to use and reuse. PTF fittings are designed for semi-rigid tubing, i.e. polyethylene, nylon, polyurethane, etc.



APC Series Specifications

Pressure: Vacuum to 120 psi, 8.3 bar

Temperature: 0°F to 180°F continuous
-18°C to 82°C continuous

Materials:

Main components and valves: Acetal

Thumb latch: Acetal

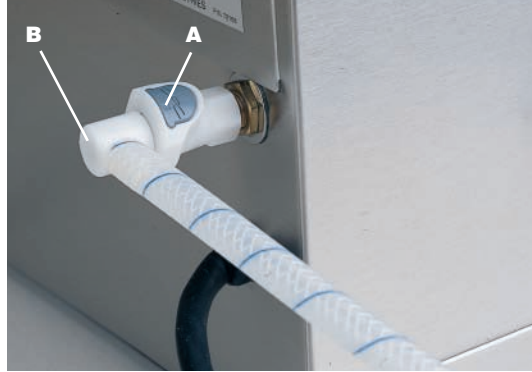
Valve spring: 316 Stainless steel

External spring: 302 Stainless steel

O-rings: Food grade EPDM

Color: Natural white with charcoal gray latch

Tubing Sizes: 1/4" and 3/8" ID, 6.4 mm and 9.5 mm ID
1/4" and 3/8" OD, 6.4 mm and 9.5 mm OD
6 x 4 mm thru 10 x 8 mm (OD x ID)



Coffee Brewer — connect and disconnect lines at the coffee brewer without having to shut off the water. Part numbers shown: (A) 42000 and (B) 42800.

Coupling Inserts

Acetal

Pipe Thread

THREAD SIZE	STRAIGHT THRU	SHUTOFF	LENGTH
1/4" NPT	42300	42400	1.43/1.77
3/8" NPT	42500	48600	1.50/1.64



In-line

Ferrules Compression Termination — for use with semi-rigid plastic tubing†

TUBING SIZE	STRAIGHT THRU	SHUTOFF	LENGTH
1/4" OD .170" ID		43400	1.99
3/8" OD .250" ID		43500	1.91



Compression Termination — for use with copper or semi-rigid plastic tubing

TUBING SIZE	STRAIGHT THRU	SHUTOFF	LENGTH
1/4" OD		44900	1.75
3/8" OD		45000	1.86



Hose Barb

TUBING SIZE	STRAIGHT THRU	SHUTOFF	LENGTH
1/4" ID	40900	42600	1.40/2.10
3/8" ID	41000	42700	1.40/1.92



Tube Stub

TERMINATION	STRAIGHT THRU	SHUTOFF	LENGTH
1/4"	9203400		1.35



Elbow

Ferrules Compression Termination — for use with semi-rigid plastic tubing†

TUBING SIZE	STRAIGHT THRU	SHUTOFF	LENGTH
1/4" OD .170" ID	49500	43000	1.32/1.45
3/8" OD .250" ID	49600	43100	1.33/1.46



Hose Barb

TUBING SIZE	STRAIGHT THRU	SHUTOFF	LENGTH
1/4" ID	46200	42800	1.20/1.45
3/8" ID	44700	42900	1.20/1.50



All measurements are in inches unless otherwise noted. Tubing must meet stated inside and outside diameters. Couplings are pictured with valves unless otherwise noted. Straight thru dimension is listed first when two measurements are provided.

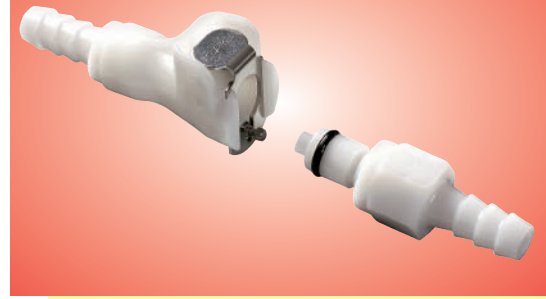
NOTE: For installation instructions, please contact Colder Inside Sales.



PMC Series

Material: Acetal

The 1/8" flow PMC coupling covers a wide variety of general food, beverage and water applications. Featuring the exclusive Colder thumb latch, the PMC is easier to use than conventional ball-and-sleeve designs. One-hand connection and disconnection and integral terminations make the PMC the choice for ease-of-use and efficient design integration.



Applications:

- Clean-in-place lines
- Pressure lines
- Dispensing equipment
- Water lines

FEATURES	BENEFITS
Colder thumb latch	One-hand connection and disconnection
Integral terminations	Fewer leak points, shorter assemblies, faster installations
Clicks when connected	Assurance of a reliable connection
Compatibility	Mates with MC Series couplings
Shutoff valves	Minimize spillage, leaks

Coupling Bodies



Couplings conform to listing requirements of NSF standard C-2 for food equipment.

Acetal

Pipe Thread

THREAD SIZE	STRAIGHT THRU	SHUTOFF	LENGTH
1/8" NPT	11700	11800	1.00
1/8" BSPT	11900	12000	1.00
1/4" NPT	10700	12100	1.10
1/4" BSPT	12200	12300	1.10

Panel Mount*

Ferrules Polytube Fitting, PTF†

TUBING SIZE	METRIC EQ.	STRAIGHT THRU	SHUTOFF	LENGTH
1/4" OD .170" ID	6 mm OD 4.3 mm ID	12400	12500	1.72

Hose Barb

TUBING SIZE	METRIC EQ.	STRAIGHT THRU	SHUTOFF	LENGTH
1/8" ID	3.2 mm ID	12600	12700	1.65
1/4" ID	6.4 mm ID	12800	12900	1.85

In-Line

Ferrules Polytube Fitting, PTF†

TUBING SIZE	METRIC EQ.	STRAIGHT THRU	SHUTOFF	LENGTH
1/4" OD .170" ID	6 mm OD 4.3 mm ID	13000	13100	1.75

Hose Barb

TUBING SIZE	METRIC EQ.	STRAIGHT THRU	SHUTOFF	LENGTH
1/8" ID	3.2 mm ID	13200	13300	1.65
1/4" ID	6.4 mm ID	10900	11400	1.85

All measurements are in inches unless otherwise noted. Tubing must meet stated inside and outside diameters. Couplings are pictured with valves unless otherwise noted. Straight thru dimension is listed first when two measurements are provided.

†NOTE: Colder's Ferrules Polytube Fitting terminations do not require ferrules to achieve a leak-free connection and are therefore easier to use and reuse. PTF fittings are designed for semi-rigid tubing, i.e. polyethylene, nylon, polyurethane, etc.



Copyright © 2005 by Colder Products Company. All rights reserved. Colder Products Company, Colder Products and CPC are registered trademarks with the US Patent & Trademark Office.

PMC Series Specifications

Pressure: Vacuum to 120 psi, 8.3 bar

Temperature: -40°F to 180°F continuous
-40°C to 82°C continuous

Materials:

Main components and valves: Acetal

Thumb latch: Stainless steel

Valve spring: 316 Stainless steel

External spring and pin: Stainless steel

O-rings: Food grade Buna-N

Color: Natural white, others available

Tube Sizes: 1/16" thru 1/4" ID, 4 mm thru 6.4 mm ID
5/32" thru 3/8" OD, 4 mm thru 9.5 mm OD



Wet bar — coupling quickly connects water lines and filters.

Coupling Inserts

Acetal

Pipe Thread	THREAD SIZE		STRAIGHT THRU	SHUTOFF	LENGTH
	1/8" NPT		13400	90008000	1.03/1.45
	1/8" BSPT		13500	13600	1.03/1.44
	1/4" NPT		11300	13700	1.13/1.42
	1/4" BSPT		13800	13900	1.13/1.42

Panel Mount*	TUBING SIZE	METRIC EQ.	STRAIGHT THRU	SHUTOFF	LENGTH
<i>Ferrules Polytube Fitting, PTF†</i>	1/4" OD .170" ID	6 mm OD 4.3 mm ID	14000	14100	1.70/1.82

Hose Barb	TUBING SIZE	METRIC EQ.	STRAIGHT THRU	SHUTOFF	LENGTH
	1/8" ID	3.2 mm ID	14200	14300	1.63/1.75
	1/4" ID	6.4 mm ID	14400	11000	1.83/1.95

In-Line	TUBING SIZE	METRIC EQ.	STRAIGHT THRU	SHUTOFF	LENGTH
<i>Ferrules Polytube Fitting, PTF†</i>	1/4" OD .170" ID	6 mm OD 4.3 mm ID	14500	14600	1.15/1.57

Hose Barb	TUBING SIZE	METRIC EQ.	STRAIGHT THRU	SHUTOFF	LENGTH
	1/8" ID	3.2 mm ID	14700	10400	1.05/1.67
	1/4" ID	6.4 mm ID	11600	10800	1.22/1.70

Elbow	TUBING SIZE	METRIC EQ.	STRAIGHT THRU	SHUTOFF	LENGTH
<i>Ferrules Polytube Fitting, PTF†</i>	1/4" OD .170" ID	6 mm OD 4.3 mm ID	10600	14800	1.17/1.21

Hose Barb	TUBING SIZE	METRIC EQ.	STRAIGHT THRU	SHUTOFF	LENGTH
	1/8" ID	3.2 mm ID	14900	15000	.85/1.21
	1/4" ID	6.4 mm ID	9000100	9000200	1.00/1.21



*Panel Opening = 1/2" Diameter Minimum Panel Thickness = .050"
Panel Thread = 1/2-24 UNS Panel Nuts = 5/8" Hex
Maximum Panel Thickness = 1/2"

All measurements are in inches unless otherwise noted. Tubing must meet stated inside and outside diameters. Couplings are pictured with valves unless otherwise noted. Straight thru dimension is listed first when two measurements are provided.



PLC Series

Material: Acetal

The 1/4" flow PLC Series is the most popular group of couplings from Colder. With proven performance worldwide in thousands of applications, the PLC line offers a wide selection of sizes and configurations. PLC couplings are injection molded from acetal thermoplastic and are durable and resistant to most solutions used in routine cleaning of tubing and hose lines. One-hand connection/disconnection, plus integral terminations make the PLC Series the choice for ease-of-use and efficient design integration. This series is also available with IdentiQuik™ RFID tags and interrogators



Applications:

- Clean-in-place lines
- Pressure lines
- Dispensing equipment
- Water lines

FEATURES	BENEFITS
Colder thumb latch	One-hand connection and disconnection
Integral terminations	Fewer leak points, shorter assemblies, faster installations
Clicks when connected	Assurance of a reliable connection
Compatibility	Mates with MC Series couplings
Compact design/ small footprint	Reduce the number, size and weight of plumbing components

Coupling Bodies



Couplings conform to listing requirements of NSF standard C-2 for food equipment.

Acetal

Pipe Thread

THREAD SIZE	STRAIGHT THRU	SHUTOFF	LENGTH
1/4" NPT	20400	21000	1.17
1/4" BSPT	31500	31600	1.15
3/8" NPT	22600	20600	1.15
3/8" BSPT	29200	29300	1.15

Panel Mount*

Ferruleless Polytube Fitting, PTF†

TUBING SIZE	METRIC EQ.	STRAIGHT THRU	SHUTOFF	LENGTH
1/4" OD .170" ID	6 mm OD 4.3 mm ID	29400	29500	1.87
3/8" OD .250" ID	9.5 mm OD 6 mm ID	29600	29700	1.95

Hose Barb

TUBING SIZE	METRIC EQ.	STRAIGHT THRU	SHUTOFF	LENGTH
1/4" ID	6.4 mm ID	28000	21100	1.65
3/8" ID	9.5 mm ID	30000	26700	1.85

JG® Push-To-Connect

TUBING SIZE	METRIC EQ.	STRAIGHT THRU	SHUTOFF	LENGTH
1/4" OD	6.4 mm OD	30100	28200	1.95

In-Line

Ferruleless Polytube Fitting, PTF†

TUBING SIZE	METRIC EQ.	STRAIGHT THRU	SHUTOFF	LENGTH
1/4" OD .170" ID	6 mm OD 4.3 mm ID	23200	24300	1.82
3/8" OD .250" ID	9.5 mm OD 6 mm ID	24400	24500	1.95

Hose Barb

TUBING SIZE	METRIC EQ.	STRAIGHT THRU	SHUTOFF	LENGTH
1/4" ID	6.4 mm ID	22500	22100	1.95
3/8" ID	9.5 mm ID	20500	20800	1.95

JG® Push-To-Connect

TUBING SIZE	METRIC EQ.	STRAIGHT THRU	SHUTOFF	LENGTH
1/4" OD	6.4 mm OD	23000	22900	1.95
3/8" OD	9.5 mm OD	24600	22300	2.09

All measurements are in inches unless otherwise noted. Tubing must meet stated inside and outside diameters. Couplings are pictured with valves unless otherwise noted. Straight thru dimension is listed first when two measurements are provided.

†NOTE: Colder's Ferruleless Polytube Fitting terminations do not require ferrules to achieve a leak-free connection and are therefore easier to use and reuse. PTF fittings are designed for semi-rigid tubing, i.e. polyethylene, nylon, polyurethane, etc.



PLC Series Specifications

Pressure: Vacuum to 120 psi, 8.3 bar

Temperature: -40°F to 180°F continuous
-40°C to 82°C continuous

Materials:

Main components and valves: Acetal

Thumb latch: Stainless steel

Valve spring: 316 Stainless steel

External spring and pin: Stainless steel

O-rings: Food grade Buna-N

Color: Natural white, others available

Tubing Sizes: 1/4" thru 3/8" ID, 6.4 mm thru 9.5 mm ID
1/4" thru 3/8" OD, 6 mm and 9.5 mm OD



Bunn® frozen beverage dispenser — coupling quickly connects water and syrup lines.

Coupling Inserts

Acetal

Pipe Thread

THREAD SIZE	STRAIGHT THRU	SHUTOFF	LENGTH
1/4" NPT	20300	22000	1.25/1.63
1/4" BSPT	29000	26100	1.53/1.63
3/8" NPT	30400	22200	1.25/1.59
3/8" BSPT	30500	30600	1.25/1.64

Panel Mount*

Ferrules Polytube Fitting, PTF†

TUBING SIZE	METRIC EQ.	STRAIGHT THRU	SHUTOFF	LENGTH
1/4" OD .170" ID	6 mm OD 4.3 mm ID	30700	26000	1.78/1.91
3/8" OD .250" ID	9.5 mm OD 6 mm ID	30800	30900	1.91/2.05

Hose Barb

TUBING SIZE	METRIC EQ.	STRAIGHT THRU	SHUTOFF	LENGTH
1/4" ID	6.4 mm ID	26500	26600	1.91/2.05
3/8" ID	9.5 mm ID	31200	20900	1.91/2.05

JG® Push-To-Connect

TUBING SIZE	METRIC EQ.	STRAIGHT THRU	SHUTOFF	LENGTH
1/4" OD	6.4 mm OD	31300	28300	1.91/2.05

In-Line

Ferrules Polytube Fitting, PTF†

TUBING SIZE	METRIC EQ.	STRAIGHT THRU	SHUTOFF	LENGTH
1/4" OD .170" ID	6 mm OD 4.3 mm ID	23300	25000	1.25/1.88
3/8" OD .250" ID	9.5 mm OD 6 mm ID	25100	25200	1.38/1.82

Hose Barb

TUBING SIZE	METRIC EQ.	STRAIGHT THRU	SHUTOFF	LENGTH
1/4" ID	6.4 mm ID	22400	21500	1.35/1.99
3/8" ID	9.5 mm ID	20100	21400	1.51/2.11

JG® Push-To-Connect

TUBING SIZE	METRIC EQ.	STRAIGHT THRU	SHUTOFF	LENGTH
1/4" OD	6.4 mm OD	23100	24700	1.35/1.95
3/8" OD	9.5 mm OD	24800	24900	1.51/2.11

Elbow

Ferrules Polytube Fitting, PTF†

TUBING SIZE	METRIC EQ.	STRAIGHT THRU	SHUTOFF	LENGTH
3/8" OD .25" ID	9.5mm OD 6.4mm ID	25300	20700	1.22/1.35

Hose Barb

TUBING SIZE	METRIC EQ.	STRAIGHT THRU	SHUTOFF	LENGTH
1/4" ID	6.4mm ID	25400	21600	1.10/1.28
3/8" ID	9.5mm ID	20200	21200	1.25/1.28

*Panel Opening = 11/16" Diameter Minimum Panel Thickness = .020"
Panel Thread = 11/16-24 UNEF Panel Nuts = 13/16" Hex
Maximum Panel Thickness = 1/2"

All measurements are in inches unless otherwise noted. Tubing must meet stated inside and outside diameters. Couplings are pictured with valves unless otherwise noted. Straight thru dimension is listed first when two measurements are provided.

NOTE: Many BSPT and metric sizes available; please contact the factory for a quote. JG is a registered trademark of John Guest USA, Inc. For JG tubing specs, contact Colder Inside Sales.



HFC12 Series

Material: Polypropylene

Patented HFC12 Series couplings have flow comparable to many 1/2" nominal flow couplings in a 3/8" body size. Compact and lightweight, HFC couplings replace bulky and heavy brass ball-and-sleeve couplings in a wide range of demanding applications. An ergonomic design and a large shrouded thumb latch pad result in a coupling that is easy to grip and simple to operate. An efficient valve design leads to high flow and exceptional low spillage. The HFC Series also adds bulkhead panel mount and Hastelloy® C spring options.



Patent Protected

Applications:

- Beverage dispensing
- Syrup lines
- Drain lines

FEATURES

BENEFITS

Colder thumb latch	One-hand connection and disconnection
Integral terminations	Fewer leak points, shorter assemblies, faster installations
Clicks when connected	Assurance of a reliable connection
Compatibility	Mates with HFC35 Series couplings
Compact design/ small footprint	Reduce the number, size and weight of plumbing components

Coupling Bodies



Couplings conform to listing requirements of NSF standard C-2 for food equipment.



Polypropylene

Pipe Thread

THREAD SIZE	STRAIGHT THRU	SHUTOFF	LENGTH
3/8" NPT	63400	63300	2.69
1/2" NPT	61200	62800	2.88
3/4" NPT	63500	61800	3.07



Bulk Head Panel Mount

Hose Barb

TUBING SIZE	METRIC EQ.	STRAIGHT THRU	SHUTOFF	LENGTH
3/8" ID	9.5 mm ID	63800	62600	2.82
1/2" ID	12.7 mm ID	63900	60300	2.82
5/8" ID	15.9 mm ID	64600	64700	2.94
3/4" ID	19.0 mm ID	64300	62000	2.94



In-Line

Hose Barb

TUBING SIZE	METRIC EQ.	STRAIGHT THRU	SHUTOFF	LENGTH
3/8" ID	9.5 mm ID	63600	60600	2.79
1/2" ID	12.7 mm ID	61500	60700	2.79
5/8" ID	15.9 mm ID	64800	64900	2.94
3/4" ID	19.0 mm ID	63700	61900	2.94

All measurements are in inches unless otherwise noted. Tubing must meet stated inside and outside diameters. Couplings are pictured with valves unless otherwise noted. Straight thru dimension is listed first when two measurements are provided.



Copyright © 2005 by Colder Products Company. All rights reserved. Colder Products Company, Colder Products and CPC are registered trademarks with the US Patent & Trademark Office.

HFC12 Series Specifications

Pressure: Vacuum to 60 psi, 4.2 bar

Temperature: 32°F to 160°F, 0°C to 71°C

Materials:

Main components and valves: Polypropylene

Thumb latch: Polypropylene

Valve spring: 316 Stainless steel

Panel mount gasket: Food grade EPDM

External spring: 302 Stainless steel

O-rings: Food grade EPDM

Color: Light gray with charcoal gray latch

Tubing Sizes: 3/8" thru 3/4" ID, 9.5 mm thru 19 mm ID



RV — coupling quickly connects reservoir of potable water to faucet and external shower.

Coupling Inserts

Polypropylene

Pipe Thread

THREAD SIZE	STRAIGHT THRU	SHUTOFF	LENGTH
3/8" NPT	62500	60500	1.77/1.88
1/2" NPT	64000	60400	1.95/2.06
3/4" NPT	64100	62100	2.14/2.26



In-Line

Hose Barb

TUBING SIZE	METRIC EQ.	STRAIGHT THRU	SHUTOFF	LENGTH
3/8" ID	9.5 mm ID	65500	62700	1.97/2.09
1/2" ID	12.7 mm ID	61300	61400	1.97/2.09
5/8" ID	15.9 mm ID	65000	65100	2.01/2.13
3/4" ID	19.0 mm ID	64200	62200	2.14/2.26



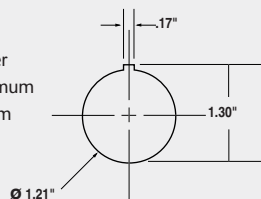
Elbow

Hose Barb

TUBING SIZE	METRIC EQ.	STRAIGHT THRU	SHUTOFF	LENGTH
3/8" ID	9.5 mm ID	65200	61100	1.93/2.05
1/2" ID	12.7 mm ID	64400	61000	1.97/2.09
3/4" ID	19.0 mm ID	65400	65300	1.95/2.07



Gasket Thickness: .06"
 Mounting Hole: 1.21" diameter
 Coupling Spacing: 1.62" minimum
 Panel Thickness: 1/4" maximum



All measurements are in inches unless otherwise noted. Tubing must meet stated inside and outside diameters. Couplings are pictured with valves unless otherwise noted. Straight thru dimension is listed first when two measurements are provided.

NOTE: Pressure, temperature, chemicals, and operating environment can affect the performance of these couplings. It is the customer's responsibility to test the suitability of these products in their own application conditions.



HFC35 Series

Material: Polysulfone

Patented HFC35 Series polysulfone couplings with 3/8" flow are able to withstand demanding applications. They feature physical strength, resistance to cleaning solutions (used in flushing tubing and hose lines) and autoclavability.



FEATURES	BENEFITS
Polysulfone material	Physically strong and chemically resistant
Bulkhead panel mount and garden hose thread options	More versatility in connections
Colder thumb latch	One-hand connection and disconnection
Compatibility	Mates with HFC12 Series couplings

Applications:

- Deionized water filtration
- Beverage dispensing
- Drain lines on food equipment

Coupling Bodies



Couplings conform to listing requirements of NSF standard C-2 for food equipment.

Polysulfone



Pipe Thread Male Thread

THREAD SIZE	STRAIGHT THRU	SHUTOFF	LENGTH
3/8" NPT	86300	80100	2.73
3/8" BSPT	86700	86800	2.73
1/2" NPT	86400	80200	2.88
1/2" BSPT	83000	86900	2.88
3/4" NPT	87000	81900	3.12
3/4" BSPT	83300	87100	3.12
3/4" GHT	85900	86000	2.94



Female Thread

THREAD SIZE	STRAIGHT THRU	SHUTOFF	LENGTH
3/4" GHT	86100	86200	2.70
3/4" BSPP	87700	87800	2.70



Bulk Head Panel Mount Hose Barb

TUBING SIZE	METRIC EQ.	STRAIGHT THRU	SHUTOFF	LENGTH
3/8" ID	9.5 mm ID	86500	80300	2.82
1/2" ID	12.7 mm ID	86600	80400	2.82
5/8" ID	15.9 mm ID	87300	87400	2.94
3/4" ID	19.0 mm ID	87200	80500	2.94



In-Line Hose Barb

TUBING SIZE	METRIC EQ.	STRAIGHT THRU	SHUTOFF	LENGTH
3/8" ID	9.5 mm ID	83500	85600	2.82
1/2" ID	12.7 mm ID	83200	80700	2.82
5/8" ID	15.9 mm ID	87500	87600	2.94
3/4" ID	19.0 mm ID	82400	80800	2.94

All measurements are in inches unless otherwise noted. Tubing must meet stated inside and outside diameters. Couplings are pictured with valves unless otherwise noted. Straight thru dimension is listed first when two measurements are provided.



HFC35 Series Specifications

Pressure: Vacuum to 125 psi, 8.6 bar

Temperature: -40°F to 280°F, -40°C to 138°C

Materials:

Main components and valves: Polysulfone

Thumb latch: Polysulfone

Valve spring: 316 Stainless steel

Panel mount gasket: Food grade EPDM

Female GHT gasket: Vinyl

External spring: 316 Stainless steel

O-rings: Food grade EPDM

Color: Natural white with charcoal gray latch

Tubing Sizes: 3/8" thru 3/4" ID, 9.5 mm thru 19 mm ID



Stellar Steamer — high production steam cooking. Quickly drain hose to bucket or floor drain. Panel mount HFC shown on bottom left of machine.

Coupling Inserts

Polysulfone

	THREAD SIZE	STRAIGHT THRU	SHUTOFF	LENGTH
Pipe Thread	3/8" NPT	83600	81400	1.82/1.94
<i>Male Thread</i>	3/8" BSPT	87900	88000	1.97/2.09
	1/2" NPT	88100	81500	1.97/2.09
	1/2" BSPT	82000	88300	1.17/2.09
	3/4" NPT	82500	88200	2.22/2.34
	3/4" BSPT	88400	88500	2.21/2.33
	3/4" GHT	88600	88700	2.03/2.15

	TUBING SIZE	METRIC EQ.	STRAIGHT THRU	SHUTOFF	LENGTH
<i>Female Thread</i>	3/4" GHT		82600	89600	1.79/1.91
	3/4" BSPP		88900	89000	1.79/1.91

	TUBING SIZE	METRIC EQ.	STRAIGHT THRU	SHUTOFF	LENGTH
In-Line	3/8" ID	9.5 mm ID	89100	80900	1.91/2.03
<i>Hose Barb</i>	1/2" ID	12.7 mm ID	83100	81000	1.91/2.03
	5/8" ID	15.9 mm ID	89200	89300	2.03/2.15
	3/4" ID	19.0 mm ID	89400	81100	2.03/2.15

	TUBING SIZE	METRIC EQ.	STRAIGHT THRU	SHUTOFF	LENGTH
Elbow	3/8" ID	9.5 mm ID	89500	81200	1.92/2.04
<i>Hose Barb</i>	1/2" ID	12.7 mm ID	83400	81300	1.96/2.16

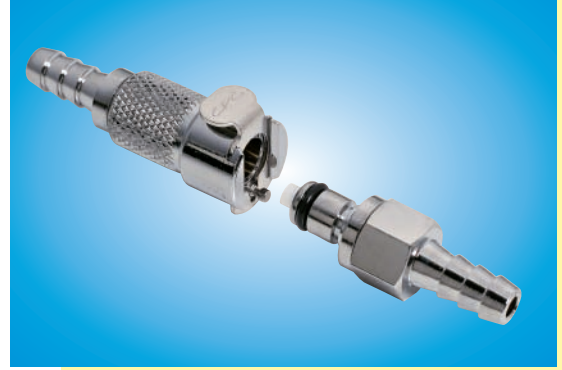


All measurements are in inches unless otherwise noted. Tubing must meet stated inside and outside diameters. Couplings are pictured with valves unless otherwise noted. Straight thru dimension is listed first when two measurements are provided.

MC Series

Material: Chrome-Plated Brass

Skillfully machined by experienced craftsmen, the 1/8" flow MC Series couplings are one of the original product lines from Colder. For over a quarter of a century, the MC Series has provided solid coupling performance for a wide range of applications.



FEATURES	BENEFITS
Brass material	Durable and able to withstand higher pressure and temperature
Chrome plating	Attractive appearance
Colder thumb latch	One-hand connection and disconnection
High temperature capability	Versions rated to 400° F (204° C)
Compatibility	Mates with PMC Series couplings

Applications:

- Coffee brewers, hot water inlet
- Cappuchino machines, lines carrying hot liquid, lines under pressure
- Coffee roasters

Coupling Bodies



Couplings conform to listing requirements of NSF standard C-2 for food equipment.

Chrome-Plated Brass

Pipe Thread	THREAD SIZE	STRAIGHT THRU	SHUTOFF	LENGTH
	1/8" NPT	15200	15500	1.00
	1/8" BSPT	15600	15700	1.00
	1/4" NPT	15800	15900	1.10
	1/4" BSPT	16000	16100	1.00

Panel Mount*	TUBING SIZE	METRIC EQ.	STRAIGHT THRU	SHUTOFF	LENGTH
<i>Ferruleless Polytube Fitting, PTF†</i>	1/4" OD .170" ID	6 mm OD 4.3 mm ID	16200	16300	1.77

Hose Barb	TUBING SIZE	METRIC EQ.	STRAIGHT THRU	SHUTOFF	LENGTH
	1/8" ID	3.2 mm ID	16400	16500	1.67
	1/4" ID	6.4 mm ID	16600	16700	1.89

In-line	TUBING SIZE	METRIC EQ.	STRAIGHT THRU	SHUTOFF	LENGTH
<i>Ferruleless Polytube Fitting, PTF†</i>	1/4" OD .170" ID	6 mm OD 4.3 mm ID	16800	16900	1.77

Hose Barb	TUBING SIZE	METRIC EQ.	STRAIGHT THRU	SHUTOFF	LENGTH
	1/8" ID	3.2 mm ID	17000	17100	1.67
	1/4" ID	6.4 mm ID	15400	17200	1.89

All measurements are in inches unless otherwise noted. Tubing must meet stated inside and outside diameters. Couplings are pictured with valves unless otherwise noted. Straight thru dimension is listed first when two measurements are provided.

†NOTE: Colder's Ferruleless Polytube Fitting terminations do not require ferrules to achieve a leak-free connection and are therefore easier to use and reuse. PTF fittings are designed for semi-rigid tubing, i.e. polyethylene, nylon, polyurethane, etc.



MC Series Specifications

Pressure: Vacuum to 250 psi, 17.3 bar

Temperature: -40°F to 180°F continuous
-40°C to 82°C continuous

Materials:

Main components: Chrome-plated brass

Thumb latch: Stainless steel

Valves: Acetal

Valve springs: 316 Stainless steel

External springs and pin: Stainless steel

O-ring: Food grade Buna-N

Color: Chrome

Tubing sizes: 1/8" thru 1/4" ID, 3.2 mm thru 6.4 mm ID
5/32", 1/4" and 3/8" OD, 4 mm thru 9.5 mm OD



Cappuccino machine —coupling connects inlet water line.

Coupling Inserts

Chrome-Plated Brass

Pipe Thread

THREAD SIZE	STRAIGHT THRU	SHUTOFF	LENGTH
1/8" NPT	17300	17400	1.03/1.43
1/8" NPT Female	17500	17600	.95/1.65
1/8" BSPT	17700	17800	1.03/1.43
1/4" NPT	17900	18000	1.08/1.43
1/4" NPT Female	18100	18200	1.15/1.82
1/4" BSPP Female	18300	18400	1.23/1.91

Panel Mount*

Ferrules Polytube Fitting, PTF†

TUBING SIZE	METRIC EQ.	STRAIGHT THRU	SHUTOFF	LENGTH
1/4" OD .170" ID	6 mm OD 4.3 mm ID	18500	18600	1.75/1.85

Hose Barb

TUBING SIZE	METRIC EQ.	STRAIGHT THRU	SHUTOFF	LENGTH
1/8" ID	3.2 mm ID	18700	18800	1.65/1.75
1/4" ID	6.4 mm ID	18900	19000	1.87/1.97

In-line

Ferrules Polytube Fitting, PTF†

TUBING SIZE	METRIC EQ.	STRAIGHT THRU	SHUTOFF	LENGTH
1/4" OD .170" ID	6 mm OD 4.3 mm ID	19100	19200	1.15/1.55

Hose Barb

TUBING SIZE	METRIC EQ.	STRAIGHT THRU	SHUTOFF	LENGTH
1/8" ID	3.2 mm ID	19300	19400	1.05/1.65
1/4" ID	6.4 mm ID	19500	19600	1.25/1.67

Elbow

Ferrules Polytube Fitting, PTF†

TUBING SIZE	METRIC EQ.	STRAIGHT THRU	SHUTOFF	LENGTH
1/4" OD .170" ID	6 mm OD 4.3 mm ID	19700	19800	1.18/1.28

Hose Barb

TUBING SIZE	METRIC EQ.	STRAIGHT THRU	SHUTOFF	LENGTH
1/8" ID	3.2 mm ID	19900	20000	1.18/1.28
1/4" ID	6.4 mm ID	9480100	15100	1.18/1.28

*Panel Opening = 1/2" Diameter Minimum Panel Thickness = .050"
Panel Thread = 1/2-24 UNS Panel Nuts = 5/8" hex
Maximum Panel Thickness = 1/2"

All measurements are in inches unless otherwise noted. Tubing must meet stated inside and outside diameters. Couplings are pictured with valves unless otherwise noted. Straight thru dimension is listed first when two measurements are provided.



LC Series

Material: Chrome-Plated Brass

Brought to market in the same generation as the MC Series, the 1/4" flow LC Series couplings are also one of the earliest product lines from Colder. The LC Series features chrome-plated brass construction for durability and an attractive appearance.



FEATURES	BENEFITS
High temperature capability	Versions rated to 400° F (204° C)
Compatibility	Mates with PLC Series couplings
Brass material	Durable construction withstands higher pressure and temperature
Chrome plating	Attractive appearance
Colder thumb latch	One-hand connection and disconnection

Applications:

- Portion steamers
- Coffee vending machines
- Tea urns

Coupling Bodies



Couplings conform to listing requirements of NSF standard C-2 for food equipment.

Chrome-Plated Brass

Pipe Thread

THREAD SIZE	STRAIGHT THRU	SHUTOFF	LENGTH
1/4" NPT	71200	74600	1.15
1/4" BSPT	74700	74800	1.15
3/8" NPT	74900	75000	1.15
3/8" BSPT	75100	75200	1.15

Panel Mount*

Ferruleless Polytube Fitting, PTF†

TUBING SIZE	METRIC EQ.	STRAIGHT THRU	SHUTOFF	LENGTH
1/4" OD .170" ID	6 mm OD 4.3 mm ID	75300	75400	1.87
3/8" OD .250" ID	9.5 mm OD 6 mm ID	75500	75600	2.00

Hose Barb

TUBING SIZE	METRIC EQ.	STRAIGHT THRU	SHUTOFF	LENGTH
1/4" ID	6.4 mm ID	70200	70300	2.00
3/8" ID	9.5 mm ID	75700	75800	2.00

In-line

Ferruleless Polytube Fitting, PTF†

TUBING SIZE	METRIC EQ.	STRAIGHT THRU	SHUTOFF	LENGTH
1/4" OD .170" ID	6 mm OD 4.3 mm ID	75900	76000	1.87
3/8" OD .250" ID	9.5 mm OD 6 mm OD	76100	76200	2.00

Hose Barb

TUBING SIZE	METRIC EQ.	STRAIGHT THRU	SHUTOFF	LENGTH
1/4" ID	6.4 mm ID	76300	70800	2.00
3/8" ID	9.5 mm ID	76400	76500	6.00

All measurements are in inches unless otherwise noted. Tubing must meet stated inside and outside diameters. Couplings are pictured with valves unless otherwise noted. Straight thru dimension is listed first when two measurements are provided.

†NOTE: Colder's Ferruleless Polytube Fitting terminations do not require ferrules to achieve a leak-free connection and are therefore easier to use and reuse. PTF fittings are designed for semi-rigid tubing, i.e. polyethylene, nylon, polyurethane, etc.



LC Series Specifications

Pressure: Vacuum to 250 psi, 17.3 bar

Temperature: -40°F to 180°F continuous
-40°C to 82°C continuous

Materials:

Main components: Chrome-plated brass

Thumb latch: Stainless steel

Valves: Acetal

Valve springs: 316 Stainless steel

External springs and pin: Stainless steel

O-ring: Food grade Buna-N

Color: Chrome

Tubing sizes: 1/4" thru 3/8" ID, 6.4 mm thru 9.5 mm ID
1/4" and 3/8" OD, 6 mm and 9.5 mm OD



Portion steamer — coupling quickly connects water line.

Coupling Inserts

Chrome-Plated Brass

Pipe Thread

THREAD SIZE	STRAIGHT THRU	SHUTOFF	LENGTH
1/4" NPT	71400	71500	1.25/1.68
1/4" NPT Female	71600	71700	1.25/1.90
1/4" BSPT	71800	71900	1.25/1.68
1/4" BSPP Female	72000	72100	1.25/1.75
3/8" NPT	72200	72300	1.25/1.55
3/8" BSPT	72400	72500	1.25/1.55

Panel Mount*

Ferrules Polytube Fitting, PTF†

TUBING SIZE	METRIC EQ.	STRAIGHT THRU	SHUTOFF	LENGTH
1/4" OD .170" ID	6 mm OD 4.3 mm ID	72600	72700	1.83/1.98
3/8" OD .250" ID	9.5 mm OD 6 mm ID	72800	70700	1.96/2.11

Hose Barb

TUBING SIZE	METRIC EQ.	STRAIGHT THRU	SHUTOFF	LENGTH
1/4" ID	6.4 mm ID	72900	73000	1.96/2.11
3/8" ID	9.5 mm ID	73100	73200	1.96/2.11

In-line

Ferrules Polytube Fitting, PTF†

TUBING SIZE	METRIC EQ.	STRAIGHT THRU	SHUTOFF	LENGTH
1/4" OD .170" ID	6 mm OD 4.3 mm ID	73300	73400	1.25/1.87
3/8" OD .250" ID	9.5 mm OD 6 mm ID	73500	73600	1.38/1.83

Hose Barb

TUBING SIZE	METRIC EQ.	STRAIGHT THRU	SHUTOFF	LENGTH
1/4" ID	6.4 mm ID	70100	70500	1.35/2.00
5/16" ID	7.9 mm ID	73700	73800	1.35/1.85
3/8" ID	9.5 mm ID	73900	70900	1.35/1.83

Elbow

Ferrules Polytube Fitting, PTF†

TUBING SIZE	METRIC EQ.	STRAIGHT THRU	SHUTOFF	LENGTH
1/4" OD .170" ID	6 mm OD 4.3 mm ID	74000	74100	1.28/1.43
3/8" OD .250" ID	9.5 mm OD 6 mm ID	74200	74300	1.28/1.43

Hose Barb

TUBING SIZE	METRIC EQ.	STRAIGHT THRU	SHUTOFF	LENGTH
1/4" ID	6.4 mm ID	74400	70400	1.28/1.43
3/8" ID	9.5 mm ID	74500	71300	1.28/1.43

*Panel Opening = 11/16" Diameter Minimum Panel Thickness = .050"
Panel Thread = 11/16-24 UNEF Panel Nuts = 13/16" Hex
Maximum Panel Thickness = 1/2"
(except 1/4" pipe thread .35")

All measurements are in inches unless otherwise noted. Tubing must meet stated inside and outside diameters. Couplings are pictured with valves unless otherwise noted. Straight thru dimension is listed first when two measurements are provided.



non-valved

Universal Dispensing Series

Material: Polypropylene

The patented 3/8" flow Universal Dispensing Coupling (UDC) provides a universal connection to the 38mm fitment neck standard on volume pack bags. An ergonomic design and a large, shrouded thumb latch pad make it easy to grip and simple to operate. This series is also available with IdentiQuik™ RFID tags and interrogators



FEATURES	BENEFITS
Reusable universal 38mm cap – UDC version	Cost savings for packager as well as end customer; fits most manufacturers' fitment necks
Disposable UDC – DUDC version	Tamper evident seal
Automatic shutoff when disengaged	Minimizes spillage
Integral terminations	Fewer leak points, shorter assemblies, faster installations
Shrouded thumb latch	Protects against accidental disconnects
Straight or elbow options	Adapt to your dispenser without rerouting supply lines

Applications:

- Beverage dispensing
- Condiment dispensing
- Syrup dispensing

Specifications

Pressure: 20" Hg Vacuum to 15 psi, 1 bar

Temperature: 32°F to 160°F, 0°C to 71°C

Closure Size: SP-400 38mm

Tubing Size: 3/8" thru 3/4" ID, 9.5mm thru 19mm ID

Materials:

Main components and valves: Polypropylene

Thumb latch: Polypropylene

Spring: 316 Stainless steel

38mm cap: Acetal

38mm cap valve: Acetal

For additional termination options, contact Colder.

UDC cap: Polypropylene

UDC valve: EPDM

O-rings: FDA silicone

CIP adapter: Acetal

Color: Light gray with charcoal gray latch

Coupling Bodies



Couplings conform to listing requirements of NSF standard C-2 for food equipment.



Polypropylene

	TUBING SIZE	SILICONE O-RING	BUNA-N O-RING	EPDM O-RING	LENGTH
In-Line	3/8" ID	99000	98400	98500	3.06
<i>Hose Barb</i>	1/2" ID	95600	97600	95300	3.06
	5/8" ID	99100	97900	98100	3.20
	3/4" ID	99200	98600	98700	3.21

Elbow

	TUBING SIZE	SILICONE O-RING	BUNA-N O-RING	EPDM O-RING	LENGTH
Elbow	3/8" ID	99300	97800	99400	3.25
<i>Hose Barb</i>	1/2" ID	95400	97700	95100	3.25

Caps

Acetal

		SILICONE O-RING	BUNA-N O-RING	EPDM O-RING	LENGTH
Thread-on	Without Thread Seal	95800	96400	97400	1.39
<i>38mm, valved</i>	With Thread Seal	95801	96401	97401	1.39

Polypropylene

		SILICONE O-RING		EPDM O-RING	LENGTH
Snap-in		9461300		9500000	1.67
<i>38mm, valved</i>					

Clean-In-Place (CIP) Adapter

Acetal

		PART NO.	LENGTH
In-Line	1/2" HB (no o-ring)	96000	1.56

All measurements are in inches unless otherwise noted. Tubing must meet stated inside and outside diameters. Couplings are pictured with valves unless otherwise noted. Straight thru dimension is listed first when two measurements are provided.



Puncture Seal Dispensing System

Material: Polyethylene (LDPE) and Polypropylene

The patented 1/4" flow Puncture Seal Dispensing System provides clean and safe liquid dispensing from bag-in-box (BIB) or other types of flexible packaging. The system consists of a Puncture Seal closure cap and a specially designed quick disconnect coupling body. The closure makes a positive thread or snap-in seal with a 38mm fitment neck. The Puncture Seal coupling body automatically breaks the membrane seal on the closure cap when connected. This series is also available with IdentiQuik™ RFID tags and interrogators



Applications may include:

- Cleaning concentrates
- Dry cleaning chemicals
- Soap dispensing
- Photo developers
- Printing inks
- Dyeing agents

NOTE: Special ordered couplings are available in versions that comply with listing requirements for NSF standard C-2.

FEATURES

BENEFITS

Puncture Seal coupling	Easily breaks the Puncture Seal membrane
Polypropylene and polyethylene materials	Greater chemical resistance
Puncture Seal membrane	Eliminates shipping caps and o-rings
Colder thumb latch	One-hand connection and disconnection

Specifications

Materials:

Main components and valves: Polypropylene

38mm closure: Polyethylene (LDPE)

Thumb latch: Stainless steel

Valve spring: 316 stainless steel

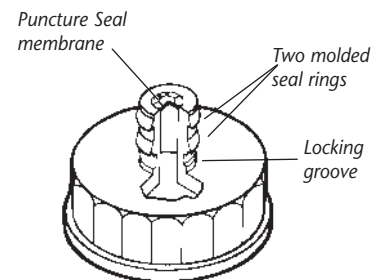
External spring and pin: Stainless steel

O-rings: EPDM

Closure Size: SP-400 38mm

Pressure: 120 psi

Temperature: 32° F to 160° F
0° C to 71° C



APC Coupling Bodies

Acetal

	TUBING SIZE	METRIC EQ.	STRAIGHT THRU	SHUTOFF	LENGTH
In-Line	1/4" ID	6.4mm ID	9208700	9208800	2.06
<i>Hose Barb</i>	3/8" ID	9.5mm ID	9206402	9206602	2.07

	TUBING SIZE	METRIC EQ.	STRAIGHT THRU	SHUTOFF	LENGTH
Elbow	1/4" ID	6.4mm ID	9208900	9209000	2.03
<i>Hose Barb</i>	3/8" ID	9.5mm ID	9206502	9206702	2.04



APC Closure

Polyethylene (LDPE)

	PART NO.	LENGTH	HEIGHT
Snap-in 38mm	9206900	1.88	1.62



NOTE: Part # 9206900 available 2006 — contact Colder for details.

PLC Coupling Bodies

Polypropylene

	TUBING SIZE	METRIC EQ.	STRAIGHT THRU	SHUTOFF	LENGTH
In-Line	1/4" ID	6.4mm ID	27600	27800	0.93
<i>Hose Barb</i>	3/8" ID	9.5 mm ID	27700	27900	0.93



PLC Closure

Polyethylene (LDPE)

	PART NO.	LENGTH	HEIGHT
Thread-on 38mm	PSC38mm	1.7	1.12

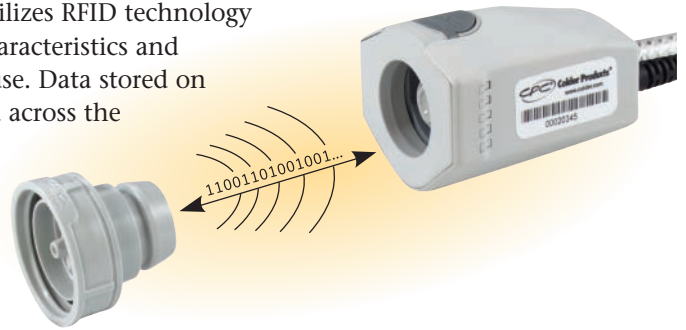


NOTE: Contact Colder for availability and lead time.



IdentiQuik™ Series Couplings

Colder's **IdentiQuik™** series of Smart Couplings utilizes RFID technology to automatically identify fluid products and their characteristics and capture data from point-of-origin through point-of-use. Data stored on the package insert or fluid delivery line is transferred across the coupling before the two halves are connected. Your control system obtains this data via RS-232 communications and uses it to improve safety, prevent misconnections, avoid dangerous combinations, verify processes, protect your brand, and capture important process data.



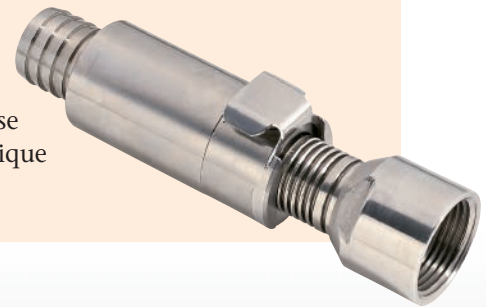
Still Looking for That Perfect Solution?

Even with thousands of standard quick disconnect couplings available, we know you still may not have found the precise part you need. That's why, for more than 25 years, Colder's Application Engineering Team has worked with customers around the world to design custom coupling solutions to solve their specific problems and improve their products' performance. Colder has solid modeling capabilities, prototype equipment, an expansive test lab, and thousands of solutions. Combine that with our years of experience and a "can do" attitude, and there is no need for you to design your solution alone.

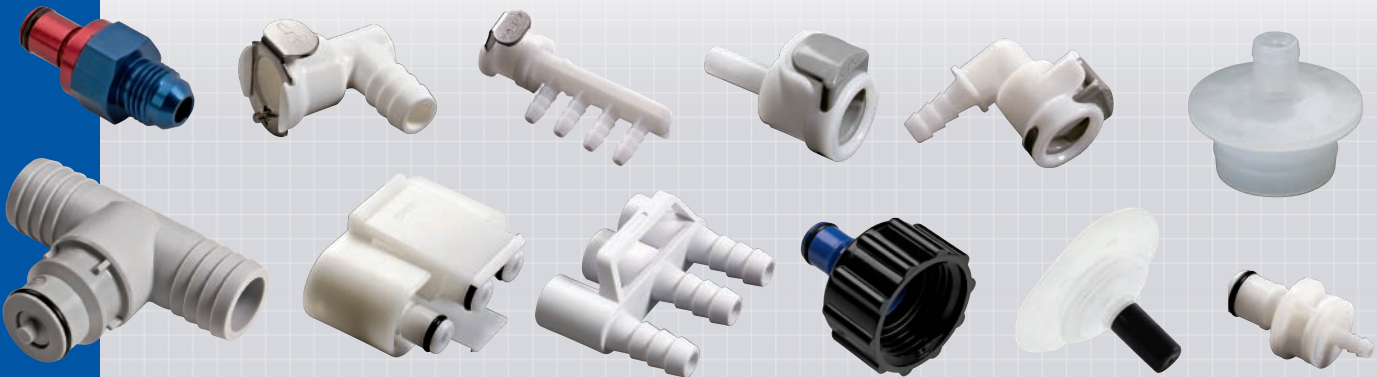
Consider a Custom-Designed Connector When:

- A quick disconnect will add value to your product, make it easier to use and more reliable
- Your requirements cannot be met by an existing standard Colder product.
- Unique requirements, budgets or timing warrant your designer's collaboration with Colder's Application Engineering Team

Remember, standard catalog items generally have the advantage of quick availability and many times, lower cost, with no initial investment of time or money. But depending on your volumes and technical requirements, it may make sense to work with our Application Engineering Team to design a unique solution tailored for your needs.



(Custom designed products may be exclusively produced for a specific customer. The proprietary products shown below might not be available for sale.)



Liquid Flow Rates

Liquid Flow Rate Information for Couplings

The charts below show the flow rate for Colder couplings. The tests were conducted with pipe thread bodies and hose barb inserts. Each coupling was tested in straight thru, single end shutoff and double end shutoff models with water at 70°F, 21°C. To determine flow rates for specific coupling configurations use the formula below.

$$Q = C_v \sqrt{\frac{\Delta P}{S}}$$

- Q = Flow rate in gallons per minute
- Cv = Average constant of various rates. See charts below
- ΔP = Pressure drop across coupling (psi)
- S = Specific gravity of liquid

Example:

- Coupling Body = MC1004
- Coupling Insert = MC2004
- Cv = .4 (see chart)
- ΔP = 40 psi
- S = 1 (water)

$$Q = C_v \sqrt{\frac{\Delta P}{S}} = .4 \sqrt{\frac{40}{1}} = 2.5 \text{ gallons per minute}$$

Cv Values for APC Couplings

Inserts

BODIES	40900	41000	44700
49200	0.96	1.08	0.94
40700	0.74	0.80	0.72
40800	0.98	1.28	0.96

Cv Values for 1/8" Flow Couplings (PMC & MC)

Inserts

BODIES	19100	19200	19300	19400	19500	19600	17300	17400	17900	18000	17500	9480100	19700	15100
15200	.40	.18	.25	.16	.50	.19	.50	.20	.51	.19	.50	.50	.38	.24
15500	.27	.18	.24	.16	.28	.20	.26	.20	.29	.18	.26	.26	.27	.24
15800	.40	.21	.26	.18	.50	.24	.50	.20	.51	.24	.50	.50	.38	.26
15900	.29	.19	.25	.17	.30	.23	.27	.21	.28	.23	.27	.28	.29	.24
16200	.40	.18	.25	.16	.40	.18	.40	.16	.36	.18	.40	.40	.38	.21
16300	.21	.17	.20	.16	.22	.17	.21	.17	.20	.17	.21	.22	.21	.18
16400	.23	.15	.19	.14	.27	.15	.27	.15	.28	.18	.27	.27	.23	.16
16500	.19	.15	.17	.14	.19	.15	.18	.15	.18	.15	.18	.19	.19	.15
16600	.33	.23	.24	.18	.44	.23	.44	.20	.38	.24	.38	.44	.33	.26
16700	.23	.17	.22	.16	.26	.21	.26	.19	.25	.21	.21	.26	.23	.24

Cv Values for 1/4" Flow Couplings (PLC & LC)

Inserts

BODIES	73300	73400	73500	73600	70100	70500	73900	70900	71400	71500	72200	72300	71600
71200	.40	.36	1.05	.58	.83	.56	1.40	.82	1.40	.75	1.40	.77	.83
74600	.36	.31	.73	.48	.66	.41	.82	.50	.80	.45	.77	.45	.81
74900	.40	.36	1.05	.60	.83	.56	1.40	.81	1.40	.76	1.40	.76	.83
75000	.37	.31	.81	.47	.70	.43	1.02	.51	.98	.46	.99	.48	.98
75500	.38	.36	.84	.63	.74	.56	1.14	.75	1.14	.70	1.14	.72	.74
75600	.38	.33	.78	.49	.68	.44	.84	.49	.81	.43	.82	.44	.81
70200	.38	.37	.87	.54	.95	.51	1.00	.70	.95	.64	1.00	.66	.95
70300	.37	.31	.61	.44	.57	.41	.78	.44	.78	.43	.75	.46	.78
75700	.38	.37	1.00	.57	.95	.53	1.40	.80	1.40	.71	1.40	.73	1.40
75800	.38	.32	.71	.49	.63	.42	.89	.51	.96	.45	.92	.49	.97

Cv Values for High Flow Couplings (HFC)

Inserts

BODIES	65500	62700	61300	61400	65200	61100	64400	61000	62500	60500	64000	60400	64200	62200
63300	1.27	1.27	1.62	1.51	1.14	1.14	1.46	1.36	1.80	1.58	1.70	1.65	-	-
62800	1.28	1.34	1.62	1.51	1.15	1.24	1.46	1.36	1.81	1.54	1.72	1.56	-	-
62600	1.07	1.00	1.17	1.14	0.96	0.90	1.05	1.03	1.33	1.26	1.30	1.24	-	-
60300	1.25	1.23	1.61	1.52	1.13	1.11	1.45	1.37	1.79	1.60	1.68	1.56	-	-
60600	1.07	1.00	1.17	1.14	0.96	0.90	1.05	1.03	1.33	1.26	1.30	1.24	-	-
60700	1.25	1.23	1.61	1.52	1.13	1.11	1.45	1.37	1.79	1.60	1.68	1.56	-	-
63700	-	-	-	-	-	-	-	-	-	-	-	-	3.94	-
61900	-	-	-	-	-	-	-	-	-	-	-	-	-	2.04

Note: For metric equivalents, consult Colder Customer Service.

Regulatory Approvals for Colder Products

FDA and USDA

The U.S. Food and Drug Administration publishes, through the Code of Federal Regulations, standardized criteria which govern the acceptability of materials used in food contact. The U.S. Department of Agriculture publishes similar standards that mirror FDA criteria. Neither agency approves or disapproves products for particular applications.

Most Colder products are made using resins that comply with applicable FDA or USDA standards. When necessary, the standard o-ring seals are replaced with specific recognized materials. Contact Colder Inside Sales for specific details regarding your application.

NSF

NSF International, based in Ann Arbor, Michigan, develops and publishes consensual criteria that govern the acceptability of materials and equipment used in food and beverage processing. They also do testing to verify the performance of materials or devices to their published criteria.

Colder products found in the Food, Beverage & Water brochure are listed under the criteria of NSF Standard C-2, which governs components used in food and beverage contact applications. Contact Colder Inside Sales for specific details regarding your application.

ISO 9001:2000 Certification

ISO 9001:2000 is a standard which assures consistency of a product ordered by customers. Organizations having ISO 9001:2000 certification have demonstrated compliance to the ISO 9001:2000 requirements by an independent registration authority.

Colder Products Company's Quality Management System has been approved and certified under the ISO 9001:2000 standard. Contact Colder Quality Management for more information.



Colder Warranty Statement: Colder Products Company warrants its products against defects in workmanship and materials a period of 12 months from the date of sale by Colder Products Company to its initial customer (regardless of any subsequent sale of the products). This warranty is void if the product is misused, altered, tampered with or is installed or used in a manner that is inconsistent with Colder Product Company's written recommendations, specifications and/or instructions, or fails to perform due to normal wear and tear. Colder Products Company does not warrant the suitability of the product for any particular application. Determining product application suitability is solely the customer's responsibility. Colder Products Company is not liable for special, indirect, incidental, consequential or other damages including, but not limited to, loss, damage, personal injury, or any other expense directly or indirectly arising from the use of or inability to use its products either separately or in combination with other products. ALL OTHER WARRANTIES EXPRESS OR IMPLIED, WHETHER ORAL, WRITTEN OR IN ANY OTHER FORM, INCLUDING BUT NOT LIMITED TO WARRANTIES OF MERCHANTABILITY OR FITNESS FOR A PARTICULAR PURPOSE, ARE EXPRESSLY EXCLUDED.

The sole and exclusive remedy under this warranty is limited, at the option of Colder Products Company, to replacement of the defective product or an account credit in the amount of the original selling price. All allegedly defective Colder Products Company products must be returned prepaid transportation to Colder Products Company, together with information describing the product's application and performance, unless otherwise authorized in writing by Colder Products Company.

WARNING: Pressure, temperature, chemicals, and operating environment can affect the performance of couplings. It is the customer's responsibility to test the suitability of Colder's products in their own applications.